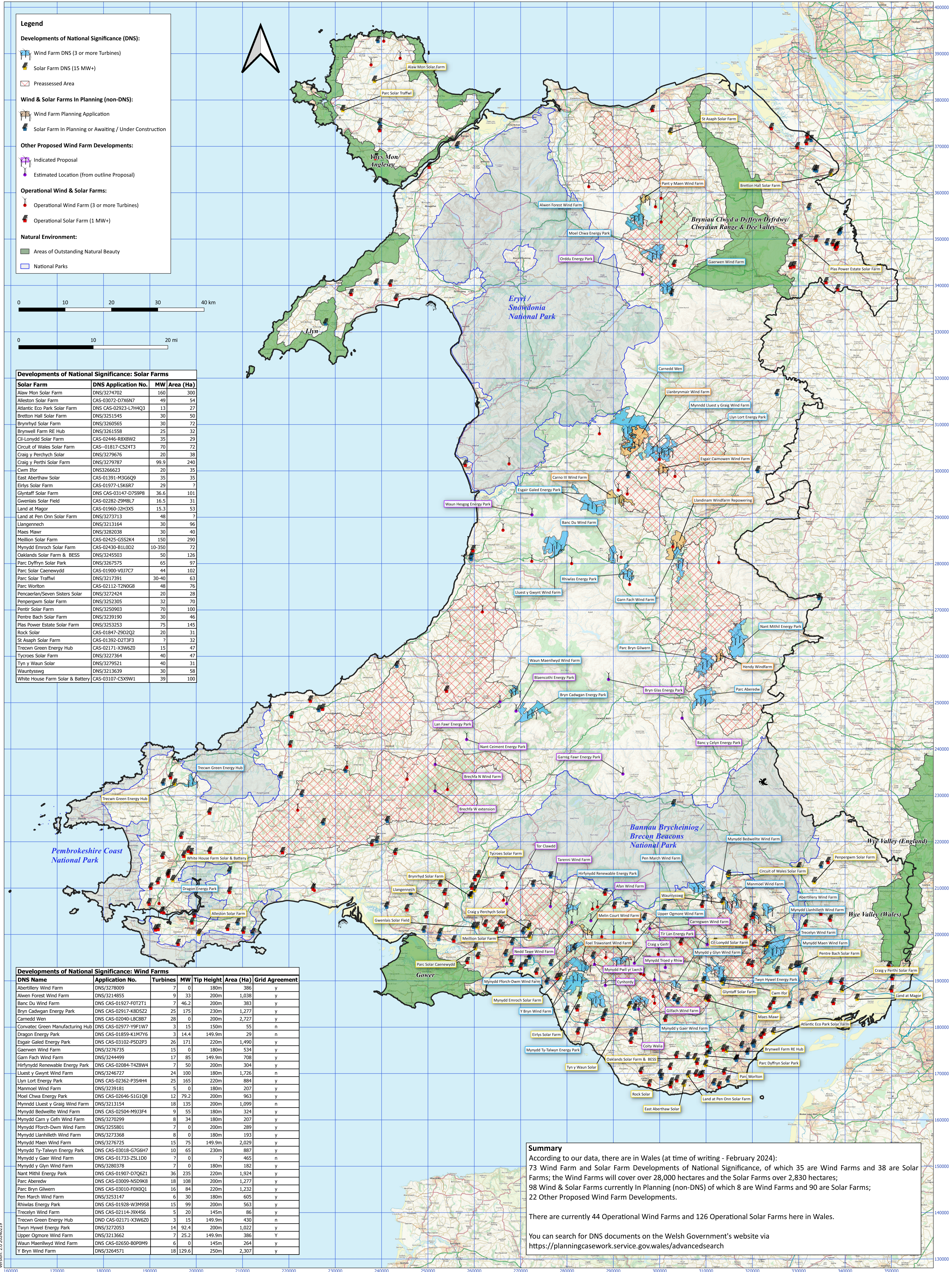


Developments of National Significance, and Existing and Proposed Wind & Solar Farms



All the information is provided here in good faith. Please let us know of any errors or omissions: info@cpwrmail.org.uk.

© Copyright Brecon & Radnor Branch of Campaign for the Protection of Rural Wales 2024.

Contains OS data © Crown copyright and database right 2024. The Operational Wind Farms are derived from data maintained by RenewableUK (renewableuk.com) and the Renewable Energy Planning Database (REPD) (from gov.uk/government/publications/renewable-energy-planning-database-monthly-extract). The Operational and Planned Solar Farms are also derived from the REPD. The Developments of National Significance (digitised from documents on planningcasework.service.gov.wales) and the Preassessed Areas (from datamap.gov.wales) are used here under the Open Government Licence for Public Sector Information (OGL): <https://www.nationalarchives.gov.uk/doc/open-government-licence/version/3/>. The Other Proposed Wind Farm developments have been obtained from various sources; the approximate locations being shown where we do not have full plans.